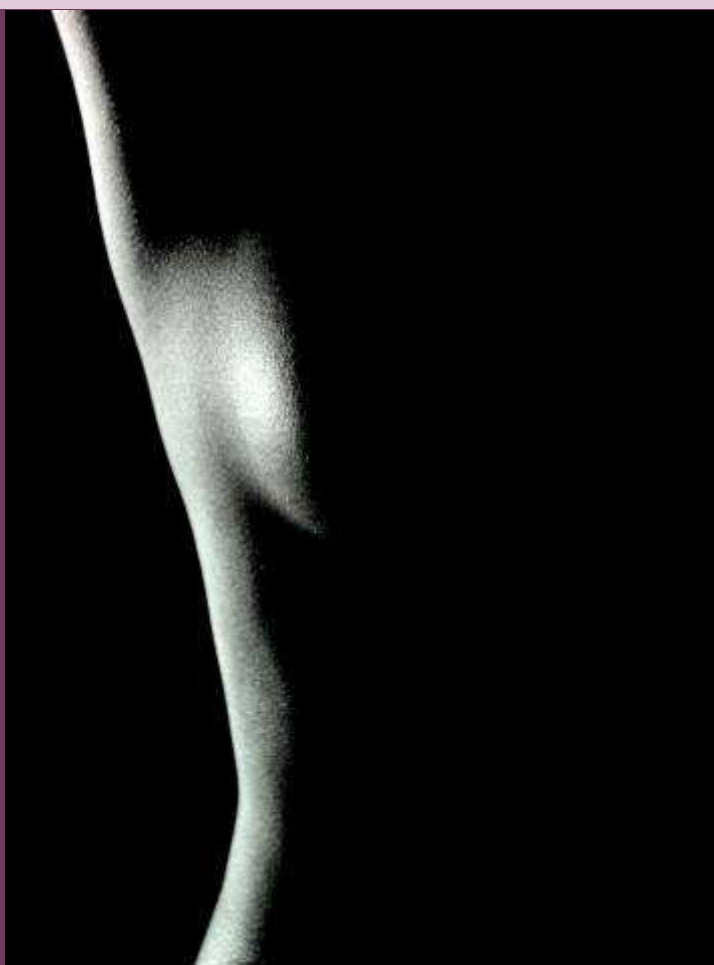


International Course

May 23rd – 27th 2011



**DIGITAL BREAST CANCER SCREENING
FOR RADIOLOGISTS**

Introduction

Ladies and gentlemen,

The rationale behind mammographic breast cancer screening is to prevent cancers to progress to advanced disease and/or node-positive stages.

In the organisation of screening “there are many roads to Rome” and almost every country with a screening program has its own screening variant. The Dutch breast cancer screening is a centrally organised and coordinated program. It is subjected to very strict quality standards because screening in general is subjected to a law and a permit system.

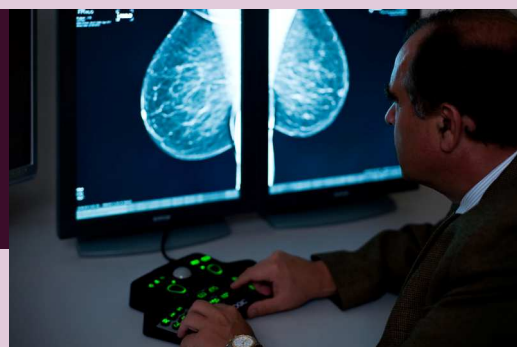
In 2010 we are celebrating 20 years of screening in the Netherlands. All involved screening radiologists and radiographers are trained by the National Expert and Training Centre in Nijmegen. We finished the digitization of the national screening program with full coverage of digital mammography and a paperless workflow. Currently, we investigate 5000 women per day.

From many sides, but especially from the new EU-countries and countries in transition to digital screening, we received numerous requests (from individual radiologists, authorities and the medical industry) to facilitate a training for professionals. This is the reason we are organising a one-week international course in breast cancer screening with digital mammography. During this week, there will be lectures and a great deal of hands-on training, feedback sessions and a number of self tests.

I hope to see you as one of the participants in May, but be aware that limited space is available.



Prof. dr. G.J. den Heeten



Date: May 23rd – 27th 2011

Topics: During the course several experts lecture about a variety of topics, like radiological-pathologic relation, epidemiological aspects of breast cancer screening, radiographic positioning and physico-technical aspects. Beside these lectures, a lot of teaching files (screening simulated, interval cancers and referred cases) are on the programme. At the end of each day the cases of that day will be discussed.

More information can be found in the programme on the next page.

Spoken language: English

Location: LRCB, Sanadome building
Address:
Weg door Jonkerbos 90
6532 SZ Nijmegen
The Netherlands

Number of participants: Maximum of 12

Registration fee: €2250,- p.p.
(including lunch, excluding travel and accommodation costs)

Registration: To register, please send an email to t.geertse@lrcb.nl.
Please mention the following information:
First and family name, title, date of birth, hospital or institution, contact information (address, telephone, e-mail).

Your registration is final when the fee is received. Payment can be made by bank transfer. Bank details will be sent after receiving your registration mail.

Cancellation: If you cancel your registration, the next refund policy will apply:

- more than 56 days before the first day of the course: 70% refund;
- between 28 and 56 days before the first day of the course: 50% refund;
- 0 to 28 days before the first day of the course: no refund.

Accommodation: In the Sanadome building also a 4 star plus Scandic hotel is housed (<http://www.sanadome.nl>). You receive a discount when sign 'guest LRCB'. Information about other hotels in Nijmegen you can find at the website: <http://en.vvvarnhemnijmegen.nl/thema/accommodation>

Accreditation: A request for CME credits is in process.



Teachers:

- Ard den Heeten, professor of radiology at AMC Amsterdam and director LRCB
- Cary van Landsveld-Verhoeven, referent radiographer LRCB
- Klaas Schuur, radiologist at St. Elisabeth Hospital Tilburg
- Mike Visser, pathologist at AMC Amsterdam
- Mireille Broeders, scientific coordinator LRCB and senior epidemiologist at UMC St Radboud Nijmegen
- Petra Bun, radiologist at UMC Leiden and medical coordinator screening at centre South-West
- Roland Holland, em. professor of pathology at UMC St Radboud Nijmegen and former director LRCB
- Ruben van Engen, head of physics section LRCB
- Ruud Pijnappel, radiologist at Martini Hospital Groningen
- Tanya Geertse, coordinator audits and training LRCB

Programme:

Monday May 23

| | |
|--------|---|
| 9.15h | Introduction <i>Tanya Geertse</i> |
| 9.30h | Principals of screening according to the Wilson-Jungner criteria <i>Ard den Heeten</i> |
| 10.15h | Coffee break |
| 10.30h | Three different approaches of screening <i>Mireille Broeders</i> |
| 11.15h | How to read mammograms for screening <i>Petra Bun</i> |
| 12.00h | Lunch |
| 13.00h | Practice screening (simulated day production) <i>under supervision of Petra Bun</i> |
| 15.30h | Discussion today's screening <i>Petra Bun</i> |
| 17.00h | End of the day |

Tuesday May 24

| | |
|--------|---|
| 9.15h | Epidemiological aspects of breast cancer screening <i>Mireille Broeders</i> |
| 10.00h | Coffee break |
| 10.15h | Breast positioning <i>Cary van Landsveld-Verhoeven</i> |
| 11.00h | Correlation radiology-pathology <i>Roland Holland</i> |
| 12.00h | Lunch |
| 13.00h | Practice screening (simulated day production) <i>under supervision of Klaas Schuur</i> |
| 15.30h | Discussion today's screening <i>Klaas Schuur</i> |
| 17.00h | End of the day |



Wednesday May 25

| | |
|--------|--|
| 9.15h | Assessment of screen-detected abnormalities <i>Ruud Pijnappel</i> |
| 10.00h | Coffee break |
| 10.15h | Breast pathology <i>Mike Visser</i> |
| 11.00h | Practice (referred cases and interval cancers) <i>under supervision of Ruud Pijnappel</i> |
| 12.00h | Lunch |
| 13.00h | Practice screening (simulated day production) <i>under supervision of Ruud Pijnappel</i> |
| 15.30h | Discussion today's screening <i>Ruud Pijnappel</i> |
| 17.00h | End of the day |

Thursday May 26

| | |
|--------|--|
| 9.15h | The role of radiologists, beside reading mammograms <i>Klaas Schuur</i> |
| 10.00h | Coffee break |
| 10.15h | Digitising of the Dutch screening (2008-2010) <i>Ard den Heeten</i> |
| 11.00h | Practice (referred cases and interval cancers) <i>under supervision of Klaas Schuur</i> |
| 12.00h | Lunch |
| 13.00h | Practice screening (simulated day production) <i>under supervision of Klaas Schuur</i> |
| 15.30h | Discussion today's screening <i>Klaas Schuur</i> |
| 17.00h | End of the day |

Friday May 27

| | |
|--------|--|
| 9.15h | Physico-technical aspects of digital mammography <i>Ruben van Engen</i> |
| 10.00h | Coffee break |
| 10.15h | Practice (referred cases and interval cancers) <i>under supervision of Petra Bun</i> |
| 11.00h | Screening test 1 |
| 13.00h | Lunch |
| 14.00h | Screening test 2 |
| 16.00h | Evaluation Screening tests and closure of training <i>Petra Bun and Tanya Geertse</i> |
| 17.00h | End of the course |



International Course
Breast Cancer Screening for Radiologists

**NATIONAL EXPERT AND TRAINING CENTRE
FOR BREAST CANCER SCREENING (LRCB)**

Visiting address
Weg door Jonkerbos 90
6532 SZ Nijmegen
The Netherlands

Postal address
P.O. Box 6873
6503 GJ Nijmegen
The Netherlands

