

Capital Equipment

CODE	DESCRIPTION	QUANTITY
REVOLVE1	Includes System Control Module, Cart, Keypad, Footswitch, and ST Holster	1
MSCM1	Mammotome® revolve™ System Control Module	1
MCART1	Mammotome® revolve™ System Cart	1
MHKEYP1	Mammotome® revolve™ Remote Keypad	1
MFOOT1	Mammotome® revolve™ Remote Footswitch	1
MSTH1	Mammotome® revolve™ ST Holster (for stereotactic x-ray guided procedures)	1

Biopsy Site Identifiers

CODE	DESCRIPTION	QUANTITY
MMK0801	8G MammoMARK™ Biopsy Site Identifier, Bowtie Shape	10
MMK0802	8G MammoMARK™ Biopsy Site Identifier, V Shape	10
MMK1001	10G MammoMARK™ Biopsy Site Identifier, Bowtie Shape	10
MMK1002	10G MammoMARK™ Biopsy Site Identifier, V Shape	10
STAR0831	8G MammoStar™ Biopsy Site Identifier, Barbell Shape	10
STAR0832	8G MammoStar™ Biopsy Site Identifier, Tribell Shape	10
STAR1031	10G MammoStar™ Biopsy Site Identifier, Barbell Shape	10
STAR1032	10G MammoStar™ Biopsy Site Identifier, Tribell Shape	10

Stereotactic Probes

CODE	DESCRIPTION (PROBE INCLUDES TUBING SET AND TISSUE MANAGEMENT SYSTEM)	QUANTITY
MST0809	8G x 9cm Mammotome® revolve™ Stereotactic Probe	5
MST0812	8G x 12cm Mammotome® revolve™ Stereotactic Probe	5
MST0815	8G x 15cm Mammotome® revolve™ Stereotactic Probe	5
MST1009	10G x 9cm Mammotome® revolve™ Stereotactic Probe	5
MST1012	10G x 12cm Mammotome® revolve™ Stereotactic Probe	5
MST1015	10G x 15cm Mammotome® revolve™ Stereotactic Probe	5

Stereotactic Disposable Accessories

CODE	DESCRIPTION	QUANTITY
MG08A	8G Mammotome® revolve™ Disposable Probe Guide, Fork Shape	25
MG10A	10G Mammotome® revolve™ Disposable Probe Guide, Fork Shape	25
MG08B	8G Mammotome® revolve™ Disposable Probe Guide, Button Shape (for GE Upright Systems)	25
MG10B	10G Mammotome® revolve™ Disposable Probe Guide, Button Shape (for GE Upright Systems)	25

Disposable Accessories

CODE	DESCRIPTION	QUANTITY
MCANISTER1	Replacement Vacuum Canister (800cc) for Mammotome® revolve™ System	10
MSMB1208	8G (12 chamber) Replacement Tissue Management System for Mammotome® revolve™ 8G Probes	10
MSMB1210	10G (12 chamber) Replacement Tissue Management System for Mammotome® revolve™ 10G Probes	10

Order Placement – Simply choose the option that works best for you

+ Phone Contact your Mammotome Customer Service Representative on 0800 862 0587. Shipping details and an order confirmation number will be provided to you upon completion of your order.

+ Fax 0800-862 0585 + Email info.uk@mammotome.com orders.uk@mammotome.com

Devicor Medical UK Ltd. • 20-22 Bedford Row • London • WC1R 4JS • United Kingdom
Tel: 0800 862 0587 • Fax: 0800 862 0585 • Email: info.uk@mammotome.com

www.mammotome.com

Mammotome
a division of DEVICOR MEDICAL PRODUCTS, INC.

©2013 Devicor Medical Products, Inc. All rights reserved.

For complete product details, see Instructions for Use.

MDM 13-0004 Rev 1/13



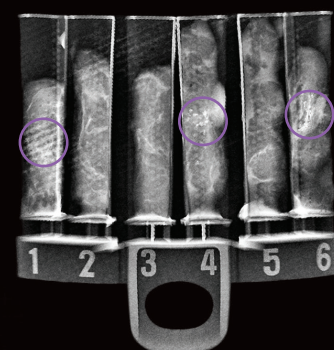
Mammotome® revolve™
dual vacuum-assisted biopsy system

introducing

Mammotome® revolve™

dual vacuum-assisted biopsy system

Mammotome® revolve™ is a new dual vacuum-assisted biopsy platform for a new generation. The only device to offer advanced tissue management technology, it is designed to empower clinical decision-making, increase procedural efficiency, and provide optimised sample reliability. **Mammotome® revolve™** puts information, ease, and clinical reassurance at your fingertips.



Specimen Radiograph (8G)

Specimen Management System

Provides touch-free tissue collection in numbered, pathology-ready chambers. Cartridge trays can be flattened and imaged to identify and easily locate calcifications. Organised presentation and visualisation of the tissue specimens allows real time sampling adjustment. Confirm sample acquisition at any needle position.



Optimal Firing Speed

Minimise lesion displacement and increase targeting accuracy with the fastest firing velocity of any VAB device on the market today.



DualVac

Continually holds and secures tissue within aperture resulting in larger, contiguous samples—delivering a more complete picture to pathology.

Cutter LED on Holster

User control and feedback verifies cutter position throughout all phases of the procedure.



Needle Offset

Provides greater access to chest wall lesions.



360° Needle Rotation

Allows you to adjust orientation of needle aperture based on position and approach to lesion.



8G Needle

Sample desired volume of tissue with fewer passes and maximise amount of intact tissue for clinical confidence



User-Controlled Variable Aperture

Customise parameters in real time to confidently access challenging lesions.



Advanced Needle Technology

Advanced needle design and shape minimise lesion displacement. Enhanced visibility, targeting efficiency and placement accuracy.



collected

designed to increase procedural efficiency



informed

designed to empower clinical decision-making



reassured

designed to empower clinical confidence

www.mammotome.com

Mammotome® revolve™

dual vacuum-assisted biopsy system